



STRAWBERRY LIGHTING

LED's grow

2021





CONTENTS

STRAWBERRY LIGHTING

CIVILIGHT Serie

3

PANDORA PLUS Serie

4

PHOTOPERIODIC HORTICULTURAL BULBS

CIVILIGHT SERIES

CIVILIGHT



The BR40 CIVILIGHT photoperiodic, horticultural, grow lighting bulb is suitable for replacing incandescent (100W) and halogen (75W) lamps. As a one-to-one substitute, the bulb allows an energy saving of 80 to 85%.

Its special spectrum is used to break dormancy, to strengthen the growth and to stimulate flowering. The additional white light creates a more pleasant environment for workers.

The compact and lightweight format is easily hung without modification of the existing installation thanks to its E27 fitting.

| | |
|-------------------------|--------------------------------|
| Product | CIVILIGHT bulb |
| Model | BR40 |
| Power consumption | 15 W |
| Input voltage | 90-264 VAC; 50Hz |
| Power factor | > 90 |
| Optics | 100° |
| Dimmable | No |
| Degree of protection | IP44 |
| Thermal management | Passive |
| Dimensions (Ø x h) | 125 x 156 mm |
| Weight | 310 g |
| Fitting | E27 |
| Max ambient temperature | 40°C |
| Switching cycles | 100,000 |
| Lifetime | L70 > 50,000 h; L90 > 25,000 h |
| Certifications | CE, RoHS |
| Guarantee | 3 years |

Mounting accessories

— Option —

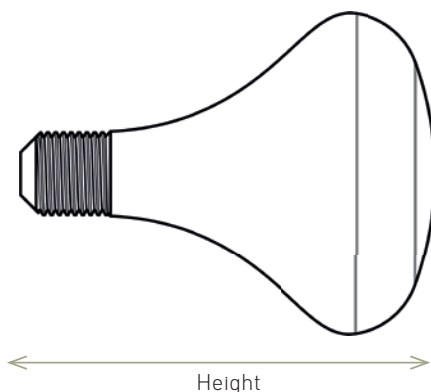


Cable

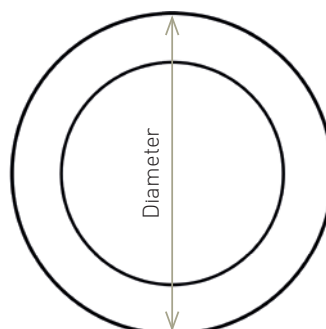


E27 Fitting

Dimensions



Height



Diameter

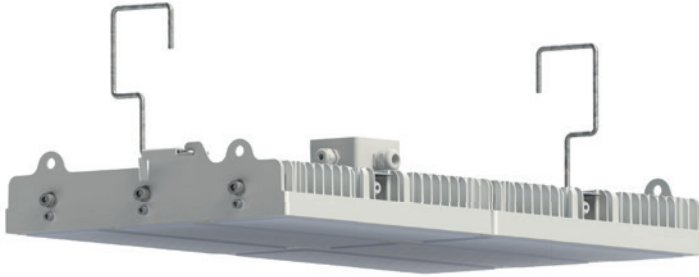
Tested by



PROEFCENTRUM
HOOGSTRATEN

VEGELED™ HORTICULTURAL SPOTLIGHTS™

PANDORA PLUS SERIES



The Pandora PLUS series consists of various module-units that can be combined with each other to create a variety of power levels and luminaires.

The LB602 model is suitable for replacing HPS 1000 W lamps. As a one-to-one substitute, it saves around 35% of the power for the same amount of light.

The series is used to make the plants grow during winter or early spring.

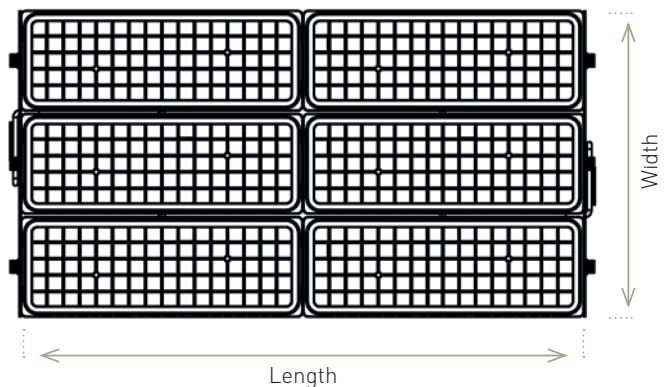
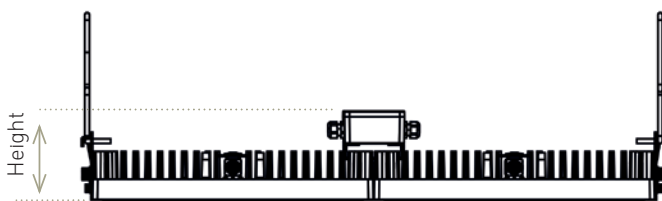
| | |
|----------------------------|----------------------------------|
| Product | Vegeled™ Pandora PLUS serie |
| Model | LB602 |
| Power consumption | 600-649W |
| Input voltage | 100-277 VAC/347-480 VAC; 50/60Hz |
| Power factor | > 95 |
| Optics | 120° |
| Dimmable | Optional: 0-10 V |
| Degree of protection | IP65 |
| Thermal management | Passive |
| Dimensions (L x W x H) | 626 x 326 x 96 mm |
| Weight (with power supply) | 10.15 kg (+ 3.35 kg) |
| Housing colour | White (black optional) |
| Cable length (AC) | 65 cm |
| Max ambient temperature | 40°C |
| Typical usable life | 50,000 h (L90 > 36,000h) |
| Certifications | CE, RoHS ((c)ETL pending) |
| Guarantee | 5 years |

Mounting accessories

Options



Dimensions



HORTICULTURAL BULBS & SPOTLIGHTS

CIVILIGHT & PANDORA PLUS SERIES

ORDERING INFORMATION FOR BULBS

| Product | Model | Code |
|----------------|-------|-------------------------------|
| CIVILIGHT bulb | BR40 | CIVILIGHT6901029650303 |

ORDERING INFORMATION FOR ACCESSORIES

| Mounting accessories | Type | Code |
|--|------------|----------------------------|
| a. E27 fitting for 13 x 5 mm cable | each | D5727 |
| b. LMVVR green PVC cable 13 X 5 mm 2 X 2.5 mm ² | 500 meters | CBLLMVVR2X2,513X5MM |
| c. Termination for 13 X 5 mm cable | each | K409 |
| d. Plug for 13 X 5 mm cable, 230 VAC | each | K729 |



a



b



c



d

ORDERING INFORMATION FOR SPOTLIGHTS

| Product | Model | Control | Input voltage | Housing | LED | Optics | Spec-trum | Protection* |
|-----------------------------------|--------------|---------------------------------------|--|----------------------------------|----------------|----------------------|-------------|--|
| Vegeled™ Pandora PLUS serie | LB602 | S ON/OFF D 0-10, PWM | H 230VAC I 277VAC J 400VAC K 480VAC | W white B black | X mixed | 120° circular | P1FR | H PMMA cover HSC Silicone coating |

Ordering example: **LB602 - D - H - W - X - 120 - P1FR - HSC**

* For harsh environments or repetitive moving of the spotlight. We recommend the use of the PMMA cover

ORDERING INFORMATION FOR ACCESSORIES*

| Mounting accessories SPOTLIGHTS and POWER SUPPLIES | Type | Code |
|--|------|--------------------|
| a. Adjustable hanging cables + hooks | kit | LBWHKIT02 |
| b. Hanging hooks for C-profile (L 40 x h 40 mm) | kit | LBHHKIT4040 |
| c. Hanging hooks for L 60 mm beam | kit | LBHHKIT6040 |
| d. Hanging hooks for tube (Ø ≤ 45 mm) | kit | LBHHKIT045 |
| AC cable accessory | | |
| e. E/F male plug, 230 VAC, IP44 | each | BPP022500 |

*Other accessories on request



2x

a



2x

b



2x

c



2x

d



e



Led Lighting Technology

Rue Puits-Marie 79 - 4100 Seraing - Belgium - www.colasse.be
vegeled@colasse.be - Phone : +32 4 225 25 89 - Fax : +32 4 365 13 76